

News & Notice

Are you looking for Mycoplasma Detection kit available for “VALIDATION” ??

iNtRON has the answers you find !!

e-Myco™ VALiD Mycoplasma PCR Detection Kit

e-Myco™ VALiD-Q Mycoplasma qPCR Detection Kit

FEATURE

- Validation according to the KFDA testing guidance based on E.P. 2.6.7 directive.
- High sensitivity with 10 CFU/ml !!
- Fast & Accurate
 - Replace conventional 28 days culture testing with 3 hours

Conventional PCR Line-up



e-Myco™ VALiD Mycoplasma PCR Detection Kit

Premix type with all components & Vacuum clean method
Fast detection and Easy to use type

Detecting the
70 Mycoplasma species

Validation
Analysis according
to the E.P. guideline

6 Species Validated (*M.pneumonia* / *M.argnini* / *M.hyorhinis* / *M.fermetans* / *M. orale* / *A.laidawii*)

10 CFU/ml Sensitivity

Cat. No. 25239

Real-time PCR Line-up



e-Myco™ VALiD – Q Mycoplasma qPCR Detection Kit

Set of primers and probe that are specific for the highly conserved mycoplasma
16S-rRNA coding region

Detecting the
70 Mycoplasma species

Validation
Analysis according
to the E.P. guideline

10 CFU/ml Sensitivity

Cat. No. 25245

SENSITIVITY TEST

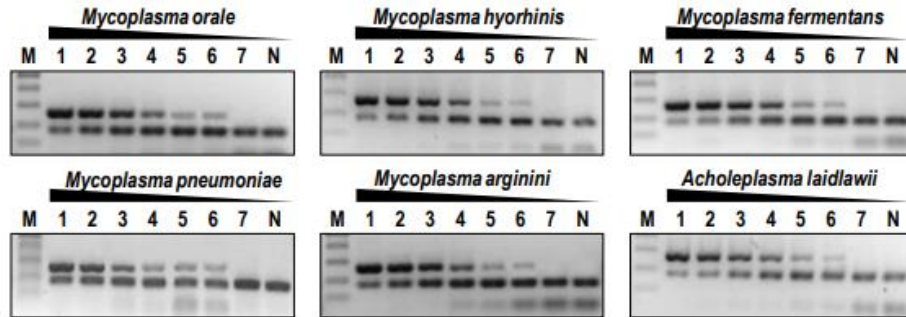


Fig. 3. Analytical Sensitivity of e-Myco™ VALiD Mycoplasma PCR Detection Kit
 Lane M, SiZer™-100 DNA Marker; Lane 1, 1×10^6 cfu/ml of gDNA; Lane 2, 1×10^5 cfu/ml of gDNA; Lane 3, 1×10^4 cfu/ml of gDNA; Lane 4, 1×10^3 cfu/ml of gDNA; Lane 5, 1×10^2 cfu/ml of gDNA; Lane 6, 10 cfu/ml of gDNA; Lane 7, 1 cfu/ml of gDNA; Lane N, No template control.

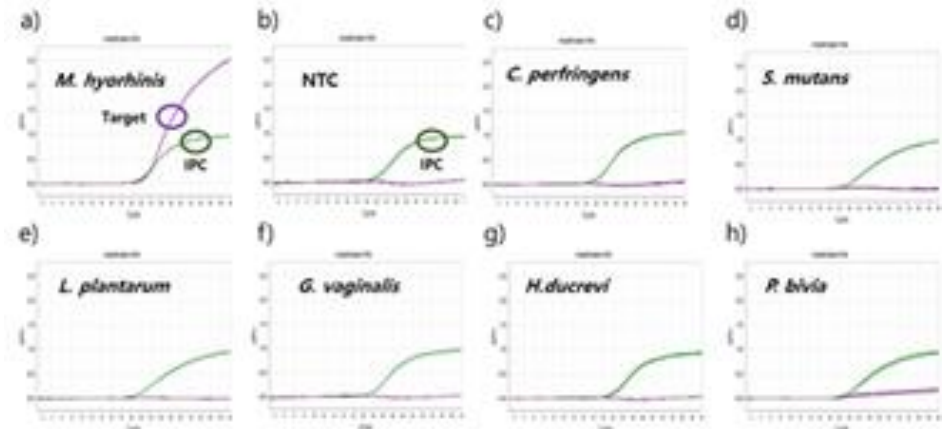


Fig. Specificity of e-Myco™ VALiD-Q Mycoplasma qPCR Detection Kit

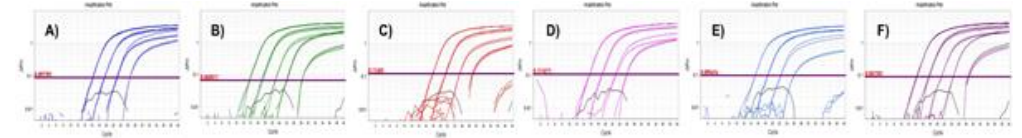


Fig. Analytical Sensitivity of e-Myco™ VALiD-Q Mycoplasma qPCR Detection Kit

•e-Myco™ VALiD Mycoplasma PCR Detection Kit is a suitable for the efficient detection of Mycoplasma contamination with high sensitivity, at least 10 CFU/ml, in the culture.

•e-Myco™ VALiD-Q Mycoplasma qPCR Detection Kit is a suitable for the efficient detection of Mycoplasma contamination with high sensitivity, at least 10 CFU/ml, in the culture.

LOD (Limit of detection) – A. laidlawii

Run	Sample Amount (CFU/ml)						
	10 ⁶	10 ⁵	10 ⁴	10 ³	10 ²	10 ¹	10 ⁰
1	8/8	8/8	8/8	8/8	8/8	8/8	2/8
2	8/8	8/8	8/8	8/8	8/8	8/8	0/8
3	8/8	8/8	8/8	8/8	8/8	8/8	1/8
Total	24/24	24/24	24/24	24/24	24/24	24/24	3/24

Note: 8/8 = 8 out of 8 test results positive.

- With e-Myco™ VALiD Mycoplasma PCR Detection kit, mycoplasma could be detected with limit with 10 CFU/ml.

Table 11. LOD (Limit of detection) - *Acholeplasma laidlawii*

Run	CFU/ml (<i>Acholeplasma laidlawii</i>)										NTC	Limit of detection
	10 ³	10 ²	10 ¹	10 ⁰	10 ³	10 ²	10 ¹	10 ⁰	10 ³	10 ²		
1	+	+	+	+	+	+	+	+	+	+	-	10 ³ CFU/ml
2	+	+	+	+	+	+	+	+	+	+	-	10 ³ CFU/ml
3	+	+	+	+	+	+	+	+	+	+	-	10 ³ CFU/ml
4	+	+	+	+	+	+	+	+	+	+	-	10 ³ CFU/ml
5	+	+	+	+	+	+	+	+	+	+	-	10 ³ CFU/ml
6	+	+	+	+	+	+	+	+	+	+	-	10 ³ CFU/ml
7	+	+	+	+	+	+	+	+	+	+	-	10 ³ CFU/ml
8	+	+	+	+	+	+	+	+	+	+	-	10 ³ CFU/ml
Total	24/24	24/24	24/24	21/24	21/24	21/24	21/24	21/24	21/24	21/24	0/24	
Positive rate(%)	100%	100%	95.8%	87.5%	87.5%	87.5%	87.5%	87.5%	87.5%	87.5%	0%	10 ³ CFU/ml

- Mycoplasma was detected at 10 CFU/ml in 95% chance using e-Myco™ VALiD-Q Mycoplasma qPCR Detection Kit.

CT Value of Mycoplasma

Table 15. CT value of Mycoplasma detection in relation to users

CFU/ml	Experimenter A			Experimenter B			Experimenter C			mean Ct	STDEV	CV (%)
10 ⁴	17.60	17.67	17.78	17.80	17.86	17.95	17.11	17.14	17.19	17.57	0.3320	1.89%
10 ³	21.18	21.23	21.32	21.30	21.31	21.46	20.60	20.70	20.81	21.10	0.3112	1.47%
10 ²	24.48	24.50	24.53	24.40	24.45	24.48	23.71	23.94	23.94	24.27	0.3159	1.30%
NTC	N/A	N/A	N/A	N/A	N/A	N/A	N/A	N/A	N/A	-	-	-

- The result of the test proves the excellent performance of e-Myco™ VALiD-Q Mycoplasma qPCR Detection Kit in any external conditions

it is iNtRON.



- If you have any questions, please send an email to us. tech@intronbio.com